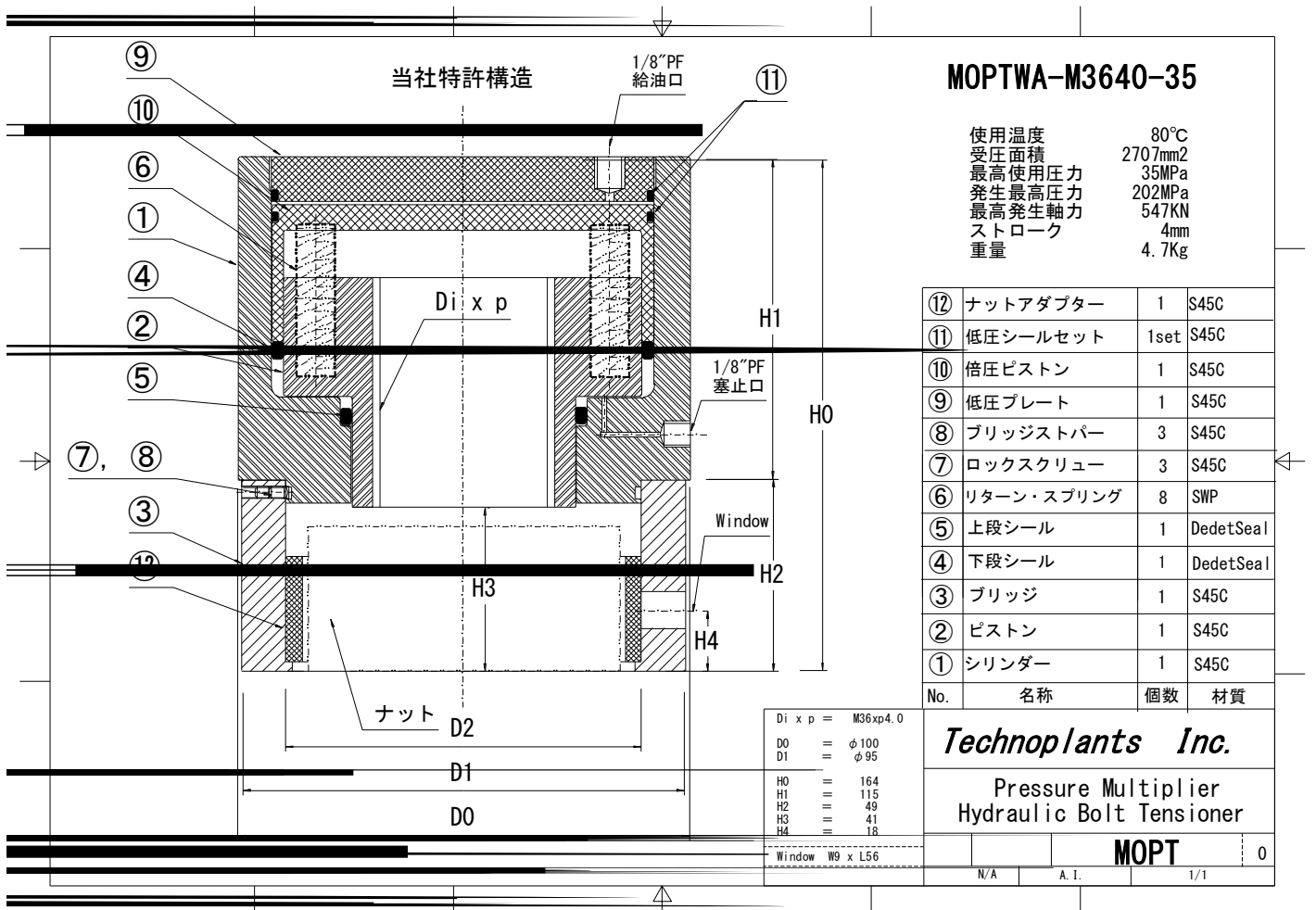


倍圧テンショナー諸元表

MOPT (倍圧一体型)

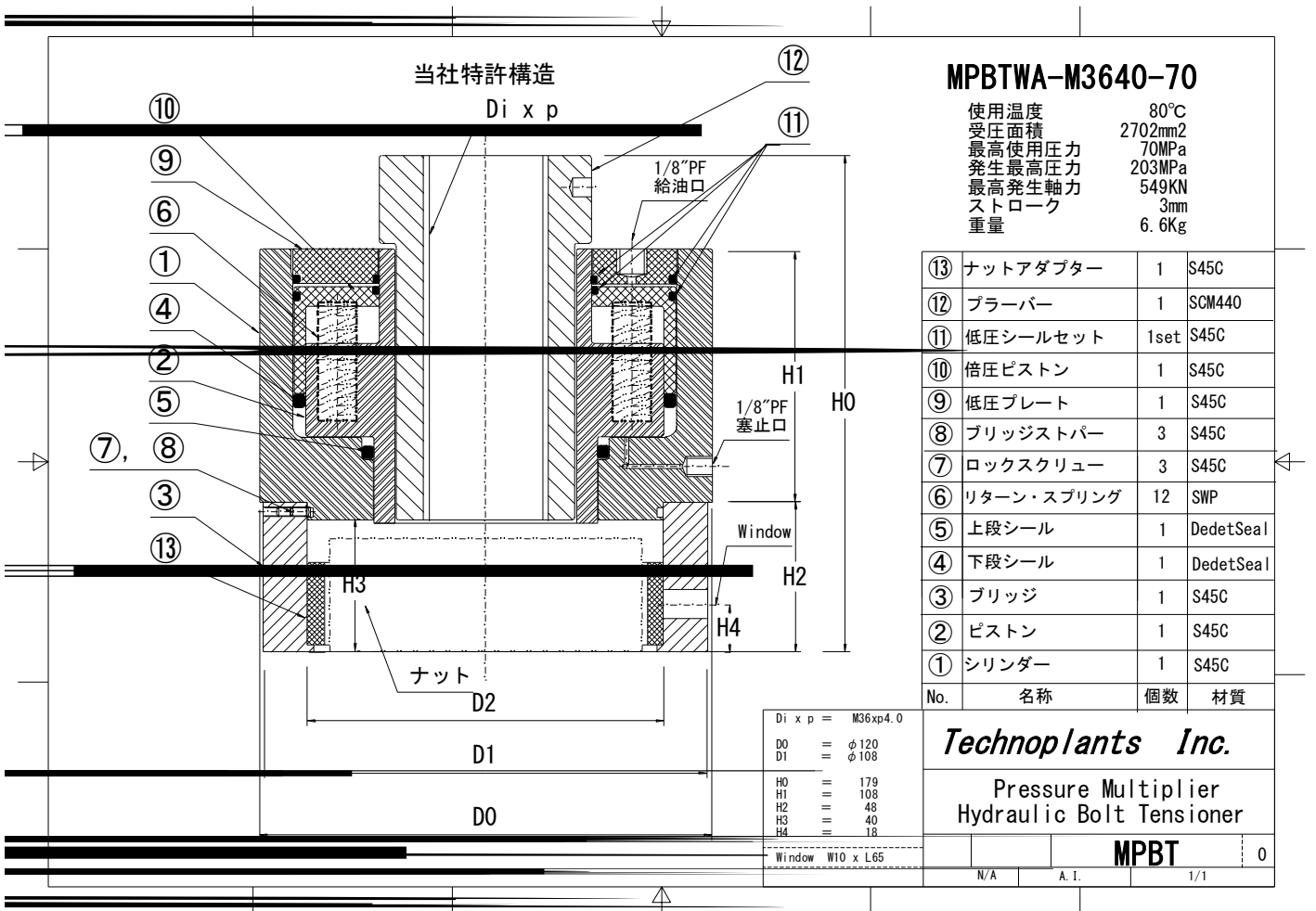
| サイズ | 軸荷重Kgf | 重量 | D0 | D1 | H0 | H1 | H2 | H3 | H4 | W | L | 低圧圧力 | 軸力ton@350 | 軸力ton@300 | ストローク |
|----------|--------|------|-----|-----|-----|-----|----|----|------|----|-----|------|-----------|-----------|-------|
| M20xP2.5 | 16200 | 0.9 | 55 | 52 | 96 | 67 | 29 | 23 | 9.9 | 5 | 31 | 350 | 16.2 | 13.9 | 2.6 |
| M22xP2.5 | 20100 | 1.2 | 61 | 58 | 103 | 72 | 31 | 25 | 10.8 | 6 | 35 | 347 | 20.3 | 17.4 | 2.7 |
| M24xP3.0 | 23400 | 1.5 | 66 | 63 | 113 | 79 | 34 | 27 | 12.2 | 7 | 38 | 350 | 23.4 | 20.0 | 2.9 |
| M27xP3.0 | 30500 | 2.1 | 75 | 71 | 126 | 88 | 38 | 31 | 13.6 | 7 | 42 | 346 | 30.9 | 26.4 | 3.1 |
| M30xP3.5 | 37200 | 2.7 | 83 | 79 | 136 | 95 | 41 | 34 | 15.0 | 8 | 47 | 348 | 37.5 | 32.1 | 3.2 |
| M33xP3.5 | 46000 | 3.9 | 93 | 88 | 149 | 104 | 45 | 37 | 16.4 | 8 | 52 | 344 | 46.7 | 40.1 | 3.4 |
| M36xP4.0 | 54100 | 4.6 | 100 | 95 | 159 | 110 | 49 | 40 | 17.8 | 8 | 56 | 346 | 54.7 | 46.9 | 3.5 |
| M39xP4.0 | 64700 | 6.1 | 110 | 105 | 171 | 120 | 51 | 43 | 19.1 | 9 | 63 | 351 | 64.5 | 55.3 | 3.7 |
| M42xP4.5 | 74300 | 7.1 | 117 | 111 | 182 | 127 | 55 | 47 | 20.5 | 9 | 66 | 345 | 75.5 | 64.7 | 3.8 |
| M45xP4.5 | 86600 | 9.1 | 127 | 121 | 194 | 137 | 57 | 50 | 22.3 | 10 | 72 | 349 | 86.9 | 74.5 | 4.0 |
| M48xP5.0 | 97700 | 10.7 | 135 | 128 | 204 | 143 | 61 | 53 | 23.7 | 11 | 76 | 350 | 97.7 | 83.8 | 4.1 |
| M52xP5.0 | 116500 | 13.8 | 147 | 140 | 221 | 154 | 67 | 57 | 25.6 | 11 | 83 | 347 | 117.6 | 100.8 | 4.3 |
| M56xP5.5 | 134600 | 17.0 | 158 | 150 | 235 | 165 | 70 | 61 | 27.4 | 12 | 89 | 347 | 135.7 | 116.3 | 4.4 |
| M60xP5.5 | 156600 | 21.4 | 171 | 162 | 250 | 175 | 75 | 66 | 29.2 | 12 | 96 | 350 | 156.8 | 134.4 | 4.6 |
| M64xP6.0 | 177400 | 25.2 | 181 | 172 | 265 | 186 | 79 | 70 | 31.0 | 13 | 103 | 345 | 180.0 | 154.2 | 4.7 |
| M68xP6.0 | 202600 | 30.8 | 194 | 184 | 279 | 196 | 83 | 74 | 33.3 | 14 | 109 | 348 | 204.0 | 174.9 | 4.9 |
| M72xP6.0 | 229400 | 36.9 | 206 | 196 | 294 | 207 | 87 | 78 | 35.1 | 15 | 117 | 345 | 232.4 | 199.2 | 5.0 |
| M76xP6.0 | 257900 | 44.1 | 219 | 208 | 309 | 215 | 94 | 82 | 37.0 | 15 | 123 | 347 | 259.9 | 222.8 | 5.2 |
| M80xP6.0 | 288000 | 51.4 | 231 | 219 | 324 | 226 | 98 | 86 | 38.8 | 16 | 130 | 346 | 291.6 | 250.0 | 5.3 |



標準価格は弊社にお問い合わせ下さい。

2) MPBT (倍圧プラーバー型)

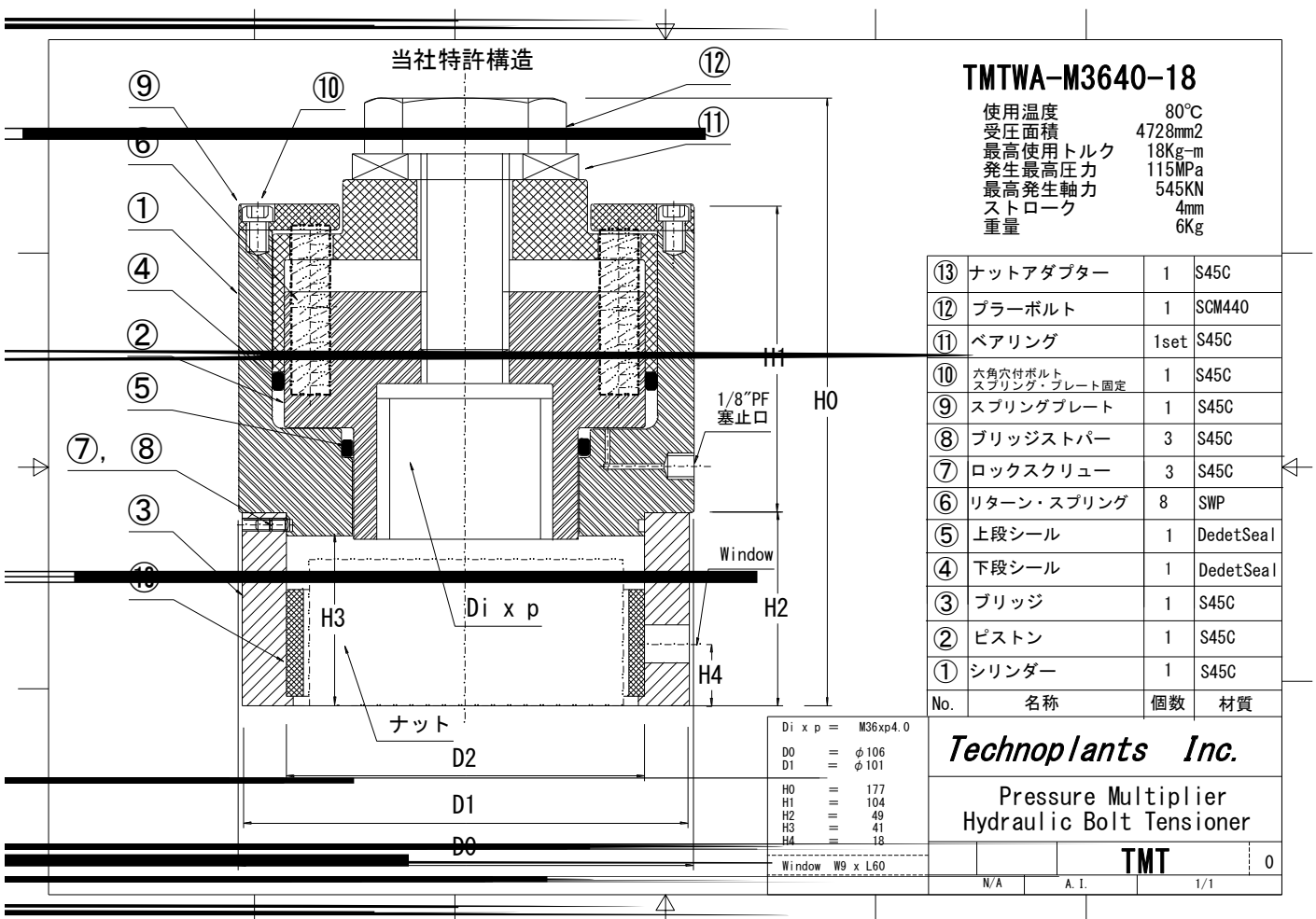
| サイズ | 軸荷重ton | 重量 | D0 | D1 | H0 | H1 | H2 | H3 | H4 | W | L | 低圧圧力 | 軸力ton@700 | 軸力ton@600 | ストローク |
|----------|--------|------|-----|-----|-----|-----|----|----|------|----|-----|------|-----------|-----------|-------|
| M20xP2.5 | 16.1 | 1.3 | 66 | 59 | 109 | 67 | 29 | 23 | 10.0 | 6 | 35 | 693 | 16.3 | 14.0 | 2.6 |
| M22xP2.5 | 20.0 | 1.7 | 73 | 66 | 118 | 71 | 32 | 25 | 10.9 | 7 | 40 | 703 | 20.0 | 17.1 | 2.7 |
| M24xP3.0 | 23.4 | 2.2 | 79 | 71 | 129 | 77 | 35 | 27 | 11.9 | 7 | 43 | 701 | 23.4 | 20.1 | 2.9 |
| M27xP3.0 | 30.4 | 3.1 | 90 | 81 | 144 | 87 | 39 | 31 | 13.7 | 8 | 49 | 690 | 30.8 | 26.4 | 3.1 |
| M30xP3.5 | 37.1 | 4.0 | 99 | 89 | 156 | 95 | 42 | 34 | 15.1 | 9 | 54 | 687 | 37.8 | 32.4 | 3.2 |
| M33xP3.5 | 45.9 | 5.4 | 110 | 99 | 171 | 104 | 45 | 37 | 16.5 | 9 | 59 | 692 | 46.4 | 39.8 | 3.4 |
| M36xP4.0 | 54.8 | 6.8 | 120 | 108 | 183 | 112 | 48 | 40 | 17.8 | 10 | 65 | 700 | 54.8 | 47.0 | 3.5 |
| M39xP4.0 | 64.7 | 8.8 | 131 | 118 | 198 | 120 | 52 | 43 | 19.2 | 10 | 71 | 692 | 65.5 | 56.1 | 3.7 |
| M42xP4.5 | 74.2 | 10.5 | 140 | 126 | 211 | 128 | 56 | 47 | 20.6 | 10 | 75 | 690 | 75.3 | 64.6 | 3.8 |
| M45xP4.5 | 86.6 | 13.0 | 151 | 136 | 225 | 137 | 59 | 50 | 22.4 | 12 | 82 | 693 | 87.4 | 74.9 | 4.0 |
| M48xP5.0 | 97.6 | 15.5 | 161 | 145 | 238 | 145 | 62 | 53 | 23.8 | 12 | 87 | 691 | 98.9 | 84.7 | 4.1 |
| M52xP5.0 | 116.5 | 19.8 | 175 | 158 | 257 | 157 | 66 | 57 | 25.6 | 13 | 95 | 691 | 118.0 | 101.1 | 4.3 |
| M56xP5.5 | 134.7 | 24.2 | 188 | 169 | 274 | 168 | 70 | 61 | 27.4 | 13 | 101 | 687 | 137.2 | 117.6 | 4.4 |
| M60xP5.5 | 156.4 | 30.4 | 203 | 183 | 292 | 177 | 76 | 66 | 29.3 | 14 | 110 | 688 | 159.2 | 136.4 | 4.6 |
| M64xP6.0 | 177.2 | 36.4 | 216 | 194 | 310 | 187 | 81 | 70 | 31.1 | 14 | 116 | 692 | 179.2 | 153.6 | 4.7 |
| M68xP6.0 | 202.5 | 44.2 | 231 | 208 | 327 | 198 | 85 | 74 | 32.9 | 15 | 124 | 691 | 205.1 | 175.8 | 4.9 |
| M72xP6.0 | 229.3 | 52.4 | 245 | 221 | 345 | 210 | 89 | 78 | 35.3 | 16 | 131 | 691 | 232.3 | 199.1 | 5.0 |
| M76xP6.0 | 258.0 | 61.8 | 260 | 234 | 363 | 220 | 93 | 82 | 37.1 | 17 | 140 | 690 | 261.8 | 224.4 | 5.2 |
| M80xP6.0 | 288.2 | 73.4 | 275 | 248 | 381 | 232 | 97 | 86 | 38.9 | 17 | 147 | 685 | 294.6 | 252.5 | 5.3 |



標準価格は弊社にお問い合わせ下さい。

3) TMT (倍圧トルク型)

| サイズ | 軸荷重Kgf | 重量 | D0 | D1 | H0 | H1 | H2 | H3 | H4 | W | L | 最大トルク | 軸力ton | ストローク |
|----------|--------|-----|-----|-----|-----|-----|-------|----|------|---|----|-------|-------|-------|
| M16xP2.0 | 10400 | 1.0 | 61 | 58 | 88 | 50 | 25.76 | 19 | 8.1 | 5 | 34 | 1.8 | 10.4 | 2.3 |
| M18xP2.5 | 12800 | 1.3 | 65 | 62 | 97 | 56 | 28 | 21 | 9.1 | 5 | 36 | 2.2 | 12.8 | 2.5 |
| M20xP2.5 | 16200 | 1.6 | 70 | 67 | 103 | 61 | 30.12 | 23 | 10.0 | 5 | 39 | 2.8 | 16.2 | 2.6 |
| M22xP2.5 | 20100 | 1.8 | 74 | 70 | 113 | 65 | 33.24 | 25 | 22.0 | 6 | 41 | 4.3 | 20.1 | 2.7 |
| M24xP3.0 | 23400 | 2.3 | 79 | 75 | 121 | 70 | 35.48 | 27 | 12.3 | 7 | 44 | 5.0 | 23.4 | 2.9 |
| M27xP3.0 | 30500 | 2.8 | 85 | 81 | 134 | 77 | 38.72 | 31 | 13.7 | 7 | 48 | 7.8 | 30.5 | 3.1 |
| M30xP3.5 | 37200 | 3.6 | 93 | 88 | 151 | 87 | 41.84 | 34 | 15.0 | 8 | 52 | 11.0 | 37.2 | 3.2 |
| M33xP3.5 | 46000 | 4.4 | 99 | 94 | 160 | 93 | 45.08 | 37 | 16.4 | 8 | 56 | 13.7 | 37.2 | 3.4 |
| M36xP4.0 | 54100 | 5.4 | 106 | 101 | 173 | 100 | 48.2 | 40 | 17.8 | 8 | 60 | 18.0 | 54.1 | 3.5 |
| M39xP4.0 | 64700 | 6.3 | 112 | 106 | 189 | 110 | 51.44 | 43 | 19.1 | 9 | 63 | 24.6 | 64.7 | 3.7 |
| M42xP4.5 | 74300 | 7.5 | 119 | 113 | 198 | 116 | 54.56 | 47 | 20.5 | 9 | 67 | 28.3 | 74.3 | 3.8 |



標準価格は弊社にお問い合わせ下さい。